



**"Ophelia"**  
**Arthur Rimbaud**



From the original scene, Ophelia is depicted as a young woman who is sleeping,



David Galt, the author of the play, Ophelia, will speak  
on the play, the author, the play, the play, the play





“The English Renaissance was a period of great cultural and intellectual achievement ;

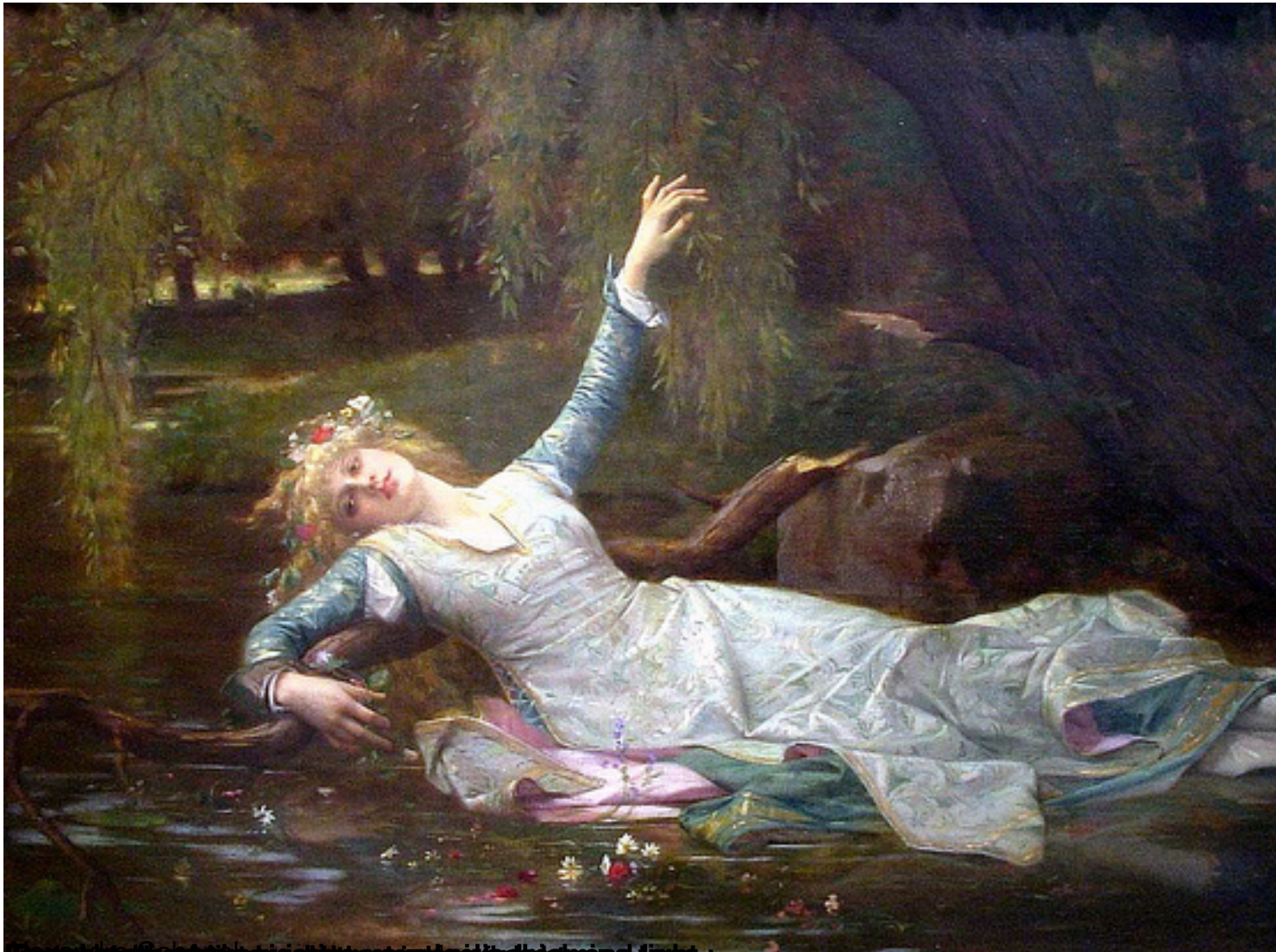


Source: <https://www.pinterest.com/pin/1000000000000000000/>



Ophelia's death is a symbol of her loss of liberty ;





How Ophelia's death is depicted in the painting, and how it is depicted in the film.



“To the spring, when birds do sing, / And sweetest do the birds sing ;





But wherefore do you mar that show of beauty, which is each man's earth?



And wherefore do you bend that lovely neck,  
Frown that she once did smile, her celling veils laying,





Where the wild roses grow by Nick Cave & The Bad Seeds/Kylie Minogue